



KIT: Cascade Earrings
1mm WireLace

WireLace®

WireLace® is a ribbon woven with very fine wires of brass and copper or aluminum and bonded with an enamel coating to create a variety of stunning colors.

NICKEL-FREE: an ideal choice for persons with nickel-allergies or for countries with a ban on certain products containing nickel.

WATERPROOF: great for fiber crafts, jewelry and sewing where items may get wet or need to be gently hand washed.

HEAT RESISTANT: a great embellishment for use in low heat projects (under 275 degrees): bake directly into polymer clay; adorn lamp shades, hot-glue into scrapbooks.
Note: certain colors (primarily copper) can change slightly when heated so advance testing is always recommended.

What Can You Do with WireLace®?

- expand it to create lacy waves about 3 times its width (not 1mm)
- use it flat like ribbon
- insert beads, string or wire inside (1mm not tubular)
- knot it
- thread it through beads
- bake polymer clay on it
- knit, crochet, weave or sew with it and much more....

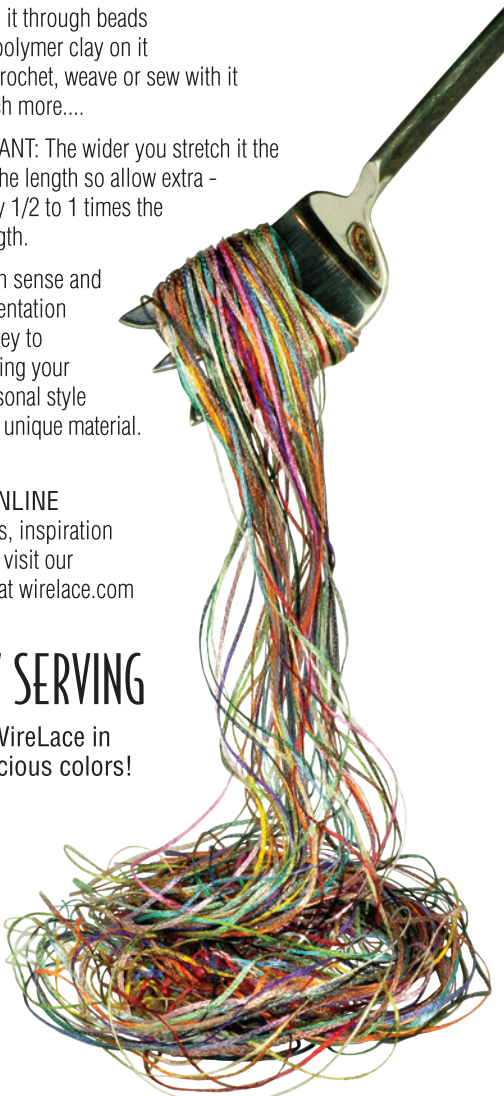
IMPORTANT: The wider you stretch it the shorter the length so allow extra - generally 1/2 to 1 times the final length.

Common sense and experimentation are the key to discovering your own personal style with this unique material.

KITS ONLINE
For ideas, inspiration and kits, visit our website at wirelace.com

NOW SERVING

1mm WireLace in 30 delicious colors!



STRINGING



Twist end and add G-S Hypo Cement on tip. Trim at an angle and string through beads.

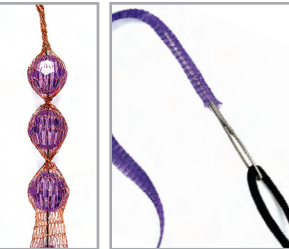
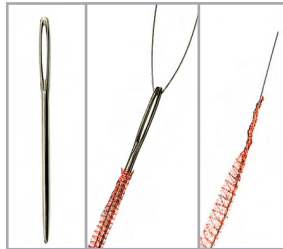


Hold crystals in place by applying G-S Hypo Cement and sliding crystals over glue.



Wrap between chain and secure with an overhand knot. Collapse WireLace® ribbon into round cord by pulling it through a bead.

SUPPORTING



Use a large blunt-end metal yarn needle to insert thread, wire, cord or beads inside the WireLace® tube. Keep lacy waves from stretching out with a wire threaded inside and then string on heavy beads.

Insert a wire into the WireLace® tube to create shapes.

FINISHING



Fast & Easy: Tie or crimp WireLace® ends, insert into a clamshell end cap and squeeze closed. Multiple strands easily fit into these 7mm clamshell endcaps available from Alacarte Clasps.



Use a bead to finish end.



Use polymer clay to bake end caps or beads directly on WireLace®.



Tie off WireLace® on an eye-pin and insert into a cone end.



4mm bell end caps from Alacarte Clasps make an elegant finish. Simply fill with epoxy and glue onto end.

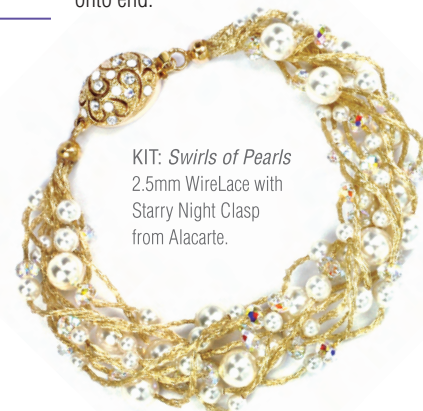
Alacarte Clasps™ Clasps & Components to fit SWAROVSKI ELEMENTS

WireLace® 31 Delicious Colors
5 Versatile Sizes

INQUIRIES, SHOW SCHEDULE & ORDERS

For a list of retailers and show schedule visit our website or contact us at:

TEL 707 887 2825
EMAIL info@alacarteclasps.com
WEB wirelace.com



KIT: Swirls of Pearls
2.5mm WireLace with
Starry Night Clasp
from Alacarte.